

# SAMPLE REPORT



## Sample Project Thermal Roof Assessment

Address City, State, ZIP

Date



**KOOL SEAL**  
ROOF RESTORATION COATINGS

**ROOFVIEW**

Powered By  **FLYGUYS**

# Satellite View Identification



# Thermography

This report details thermal anomalies as viewed by overhead drone imaging.

Thermal Imaging identifies temperature differences that are further evaluated to determine if a possible moisture issue may be present.

False anomalies such as reflections from surrounding equipment are excluded from this report.

The remaining anomalies are presented for further on-site evaluation. Areas indicated can be further assessed on the roof by means of moisture meters, capacitance meters and core samples.

Hand Held  
Capacitance Meter



Moisture Meter  
with probe



Roof Core Tool





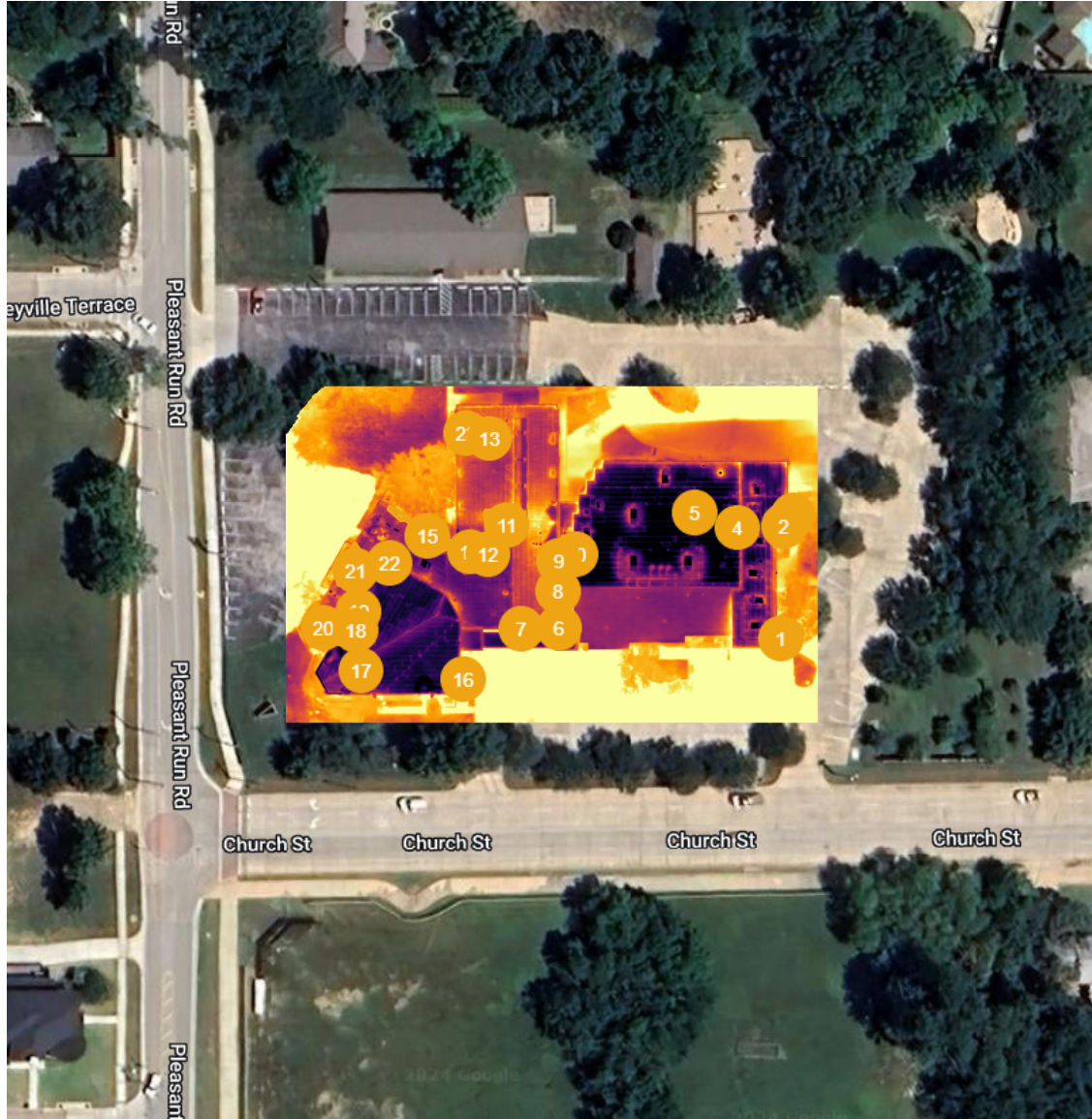
# Project Name, Site Address

## Thermal Analysis Issue Report



Created on March 14, 2024

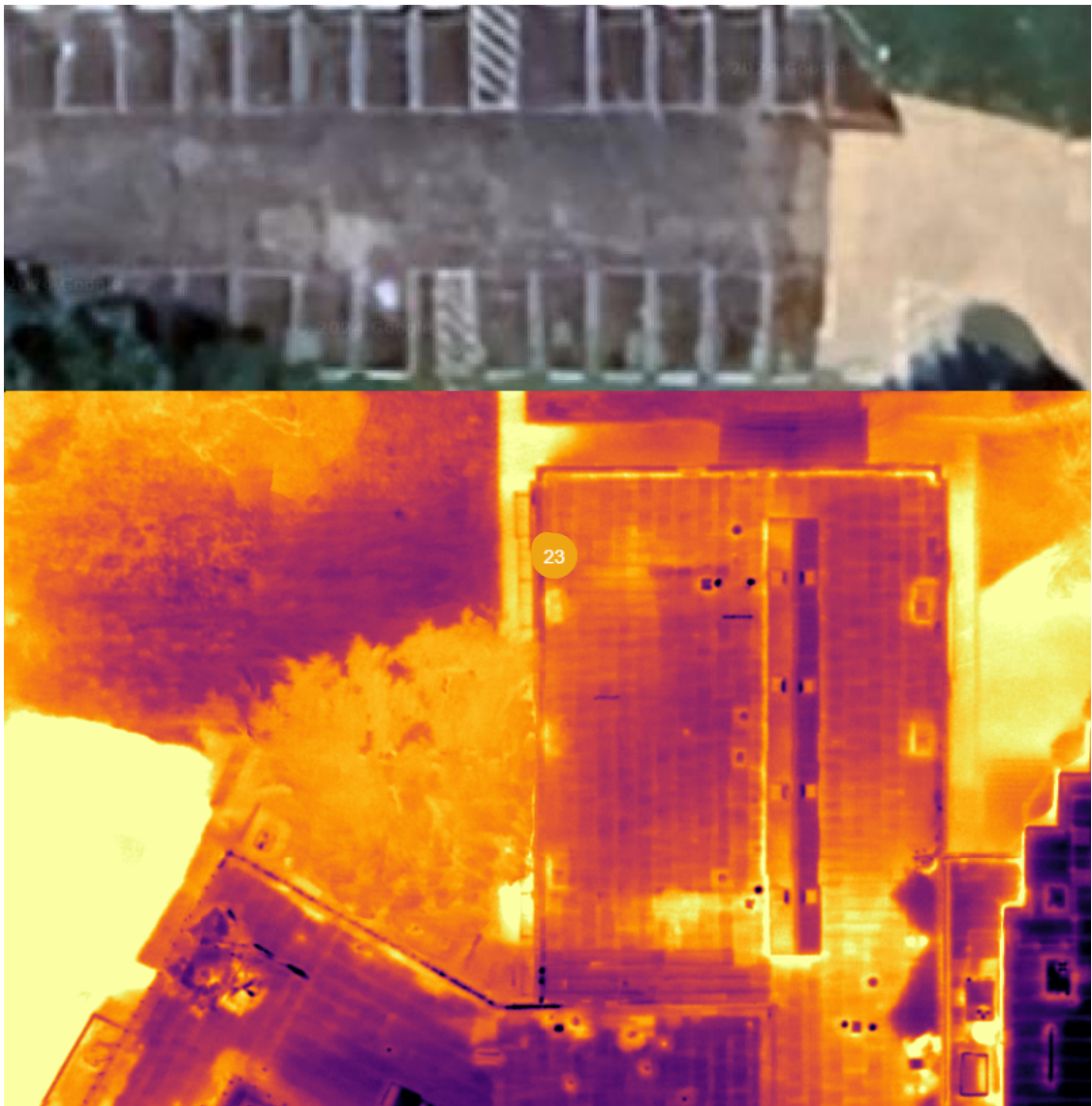
Captured on March 9, 2024



23 - Observation

Open

Mar 9, 2024 at 8:03pm



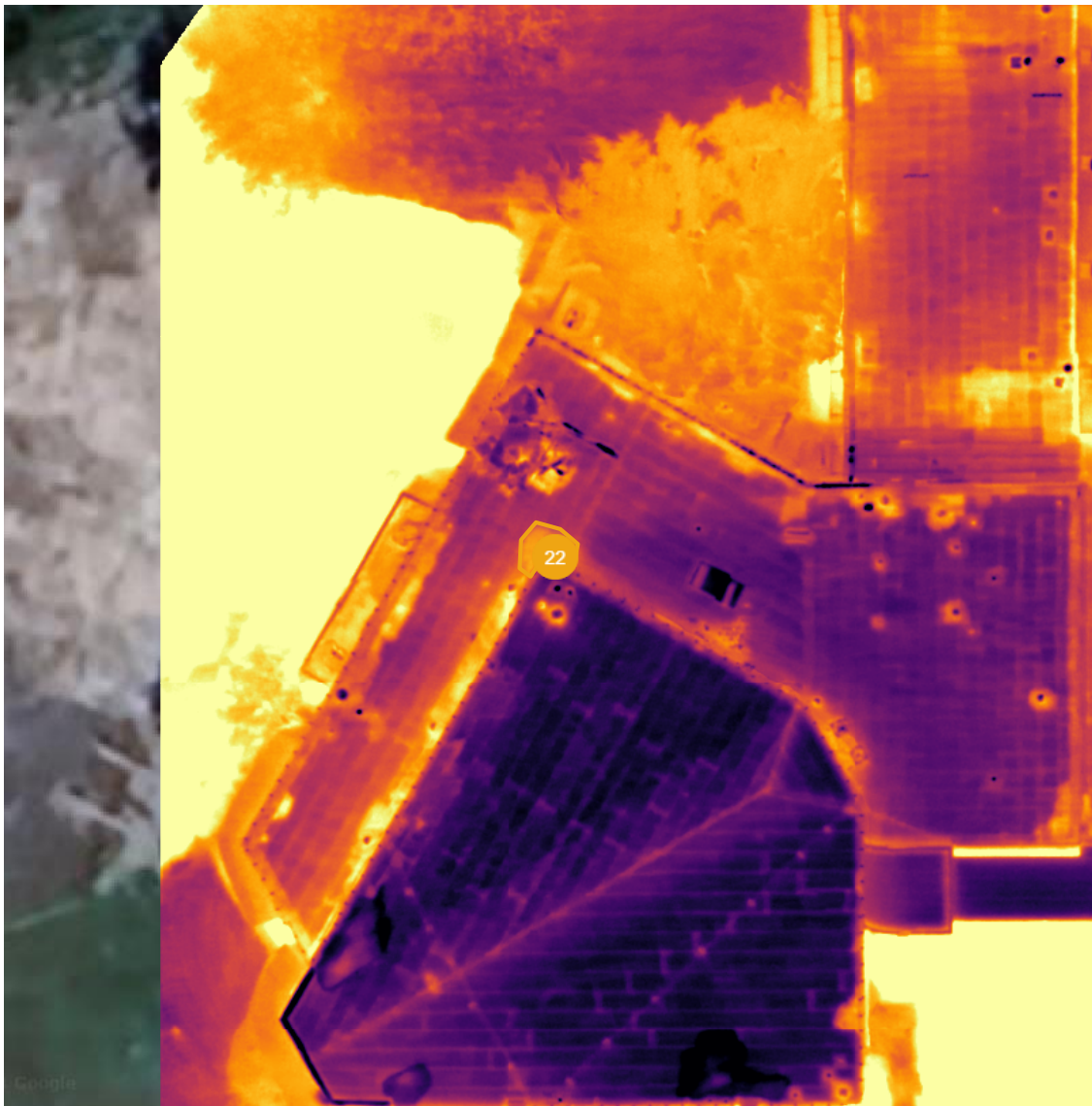
Details

Summary:	Thermal anomaly pattern typical of moisture under membrane at markers. Further investigation is recommended by a qualified professional roofer to verify.		
Created:	Mar 13, 2024, 6:37pm by Jay Bowen		
Cost of Repair:	—		
Lat/Long:	32.89067, -97.15382		
Area:	14.45 ft <sup>2</sup>		
Radius:	2.14 ft		
Perimeter:	13.47 ft		

22 - Observation

Open

Mar 9, 2024 at 8:03pm



Details

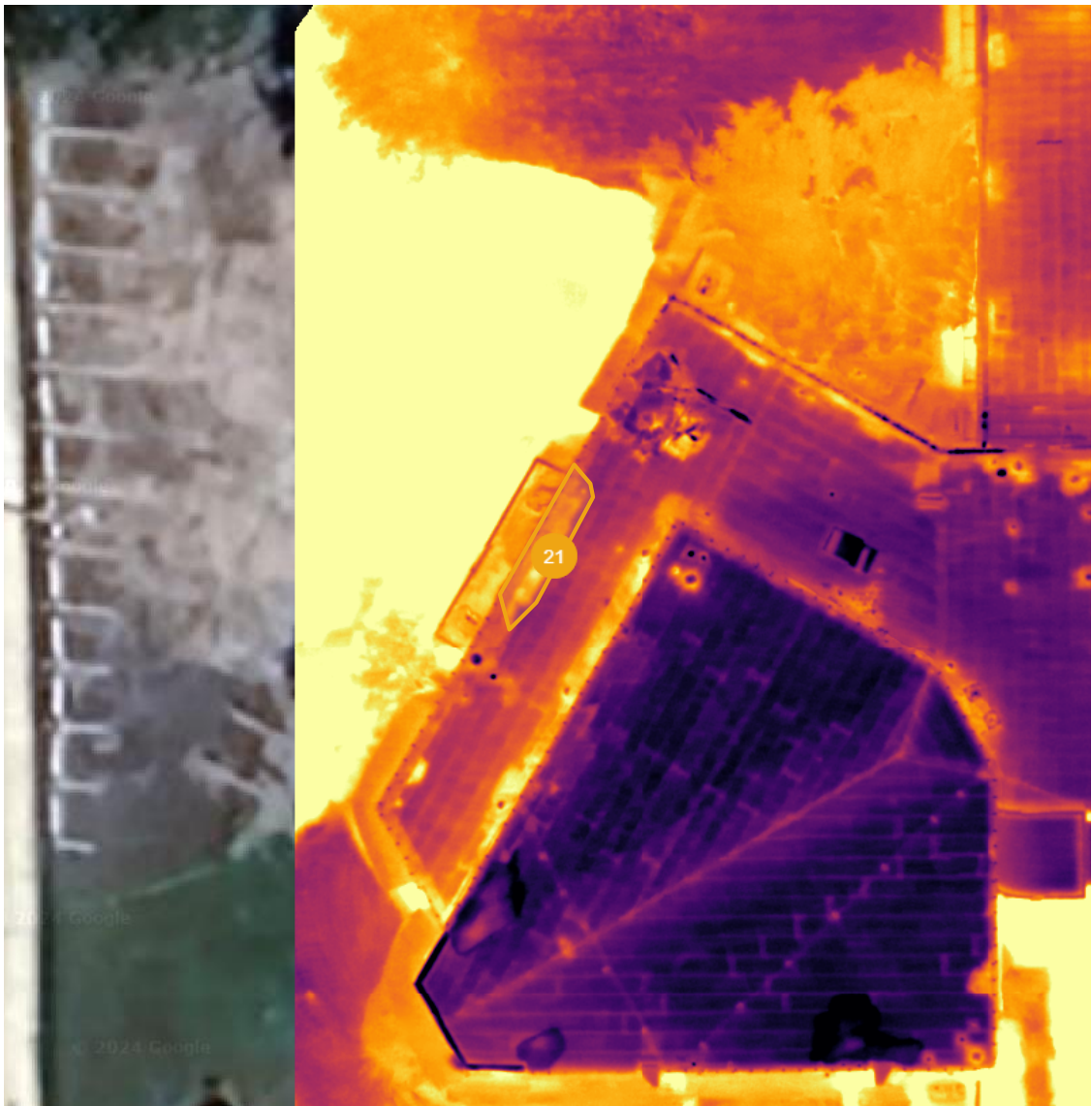
Summary:	Thermal anomaly pattern typical of moisture under membrane at markers. Further investigation is recommended by a qualified professional roofer to verify.		
Created:	Mar 13, 2024, 6:37pm by Jay Bowen		
Cost of Repair:	—		
Lat/Long:	32.89045, -97.15397		
Area:	42.86 ft <sup>2</sup>		
Surface area:	89.05 ft <sup>2</sup>		



21 - Observation

Open

Mar 9, 2024 at 8:03pm



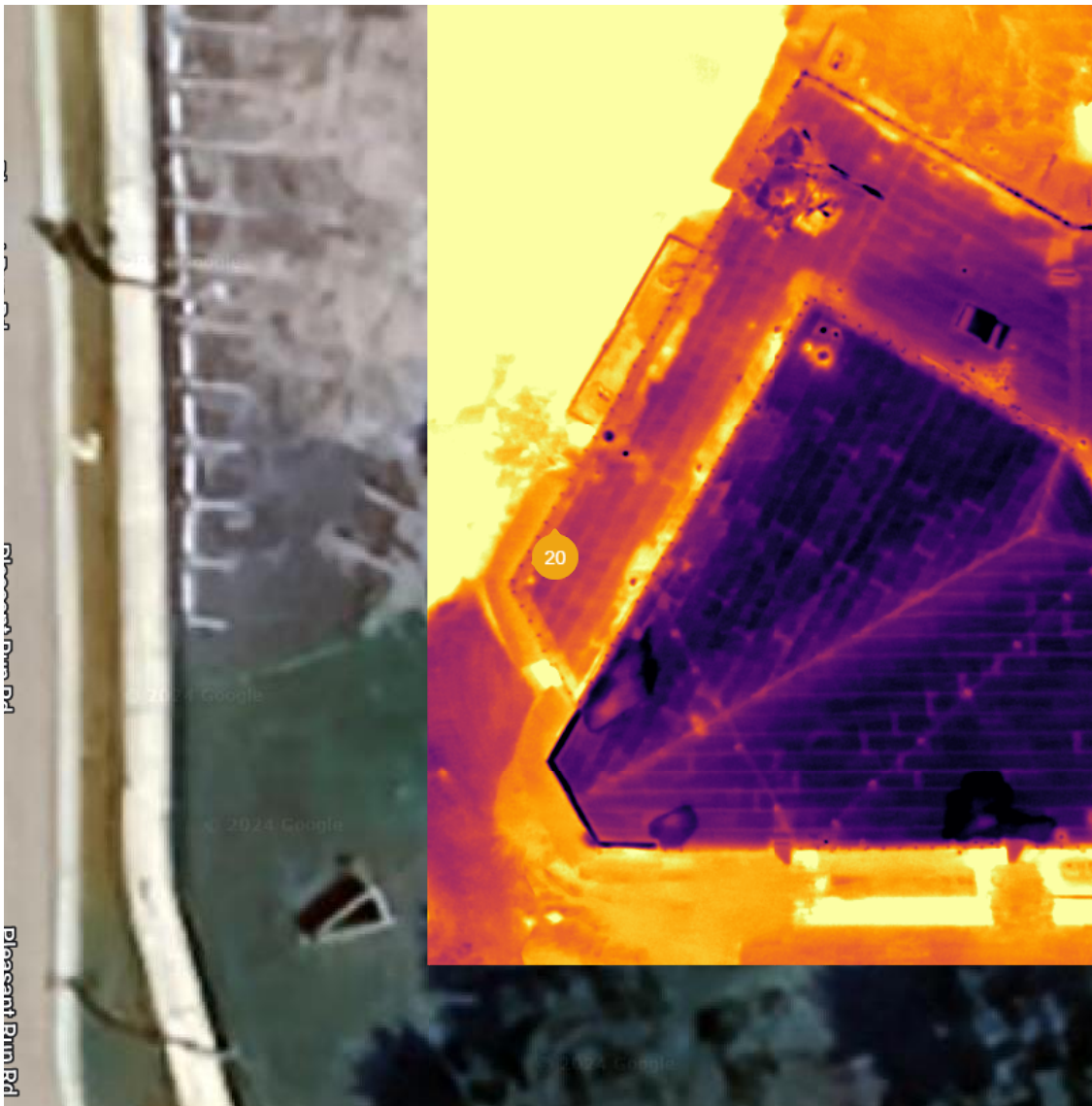
Details

Summary:	Thermal anomaly pattern typical of moisture under membrane at markers. Further investigation is recommended by a qualified professional roofer to verify.		
Created:	Mar 13, 2024, 6:37pm by Jay Bowen		
Cost of Repair:	—		
Lat/Long:	32.89044, -97.15403		
Area:	122.19 ft <sup>2</sup>		
Surface area:	153.01 ft <sup>2</sup>		

20 - Observation

Open

Mar 9, 2024 at 8:03pm



Details

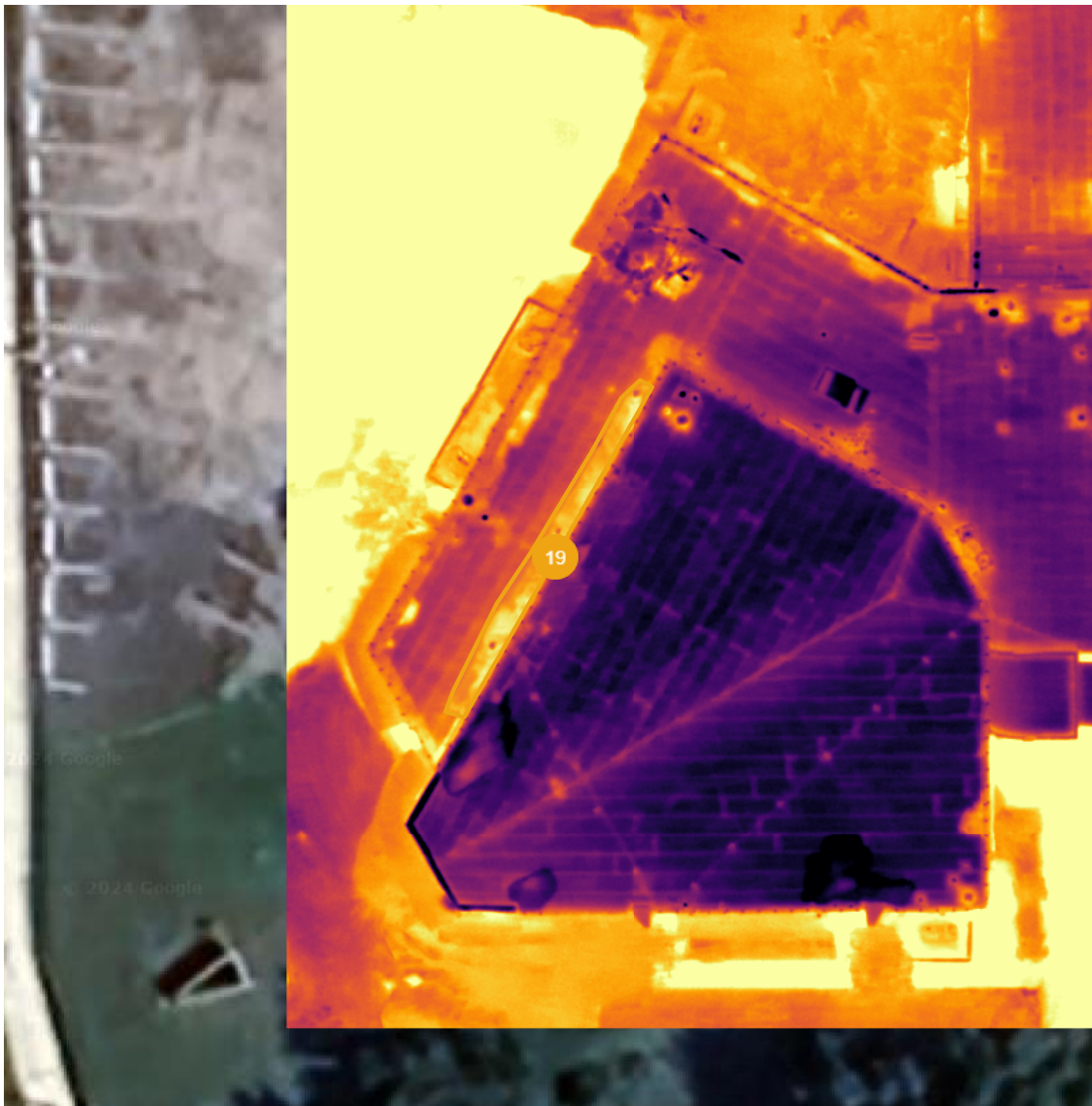
Summary:	Thermal anomaly pattern typical of moisture under membrane at markers. Further investigation is recommended by a qualified professional roofer to verify.		
Created:	Mar 13, 2024, 6:37pm by Jay Bowen		
Cost of Repair:	—		
Lat/Long:	32.89035, -97.15410		
Area:	12.27 ft <sup>2</sup>		
Surface area:	17.65 ft <sup>2</sup>		



19 - Observation

Open

Mar 9, 2024 at 8:03pm



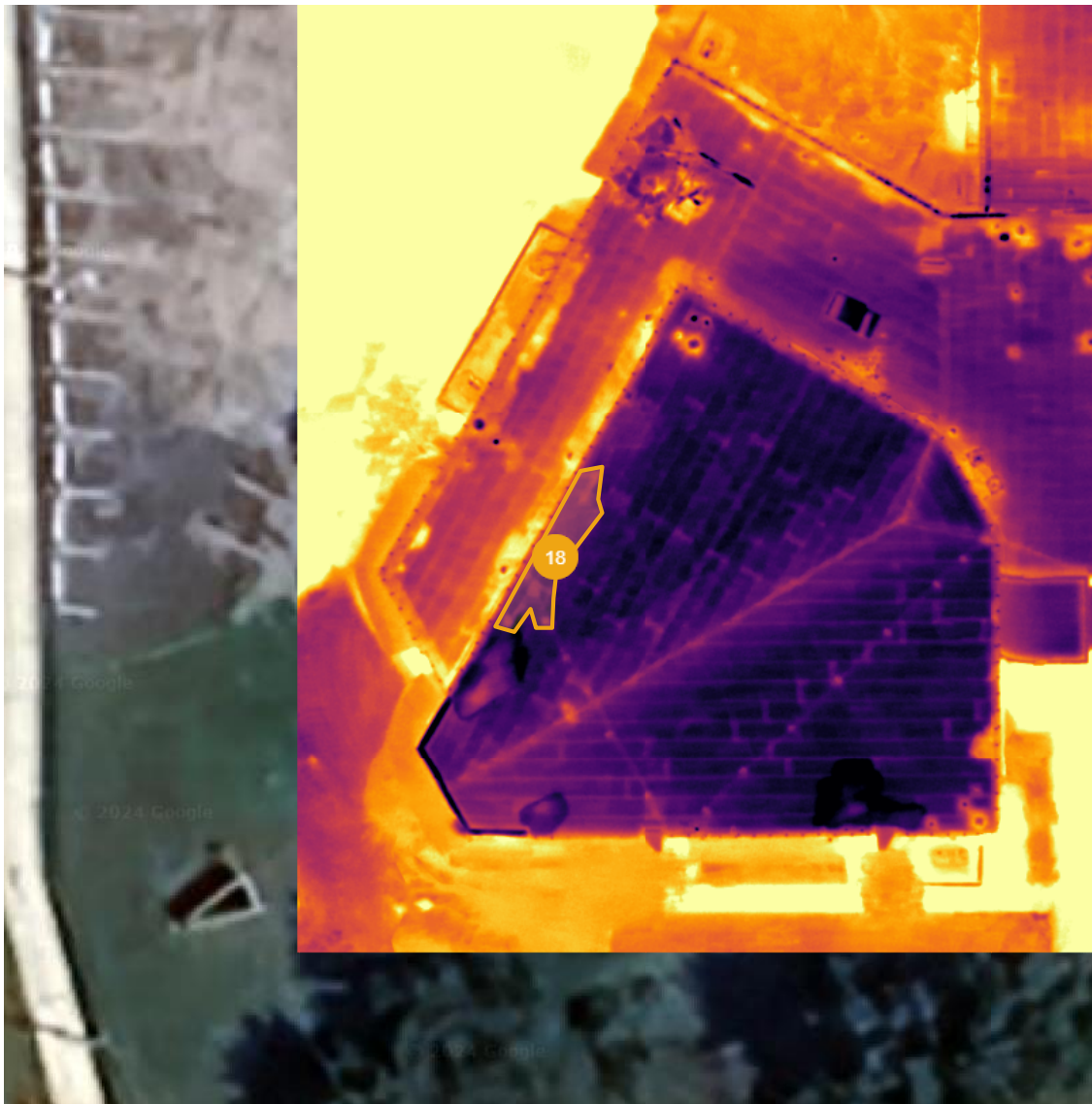
Details

Summary:	Thermal anomaly pattern typical of moisture under membrane at markers. Further investigation is recommended by a qualified professional roofer to verify.		
Created:	Mar 13, 2024, 6:37pm by Jay Bowen		
Cost of Repair:	—		
Lat/Long:	32.89037, -97.15404		
Area:	200.07 ft <sup>2</sup>		
Surface area:	521.22 ft <sup>2</sup>		

18 - Observation

Open

Mar 9, 2024 at 8:03pm



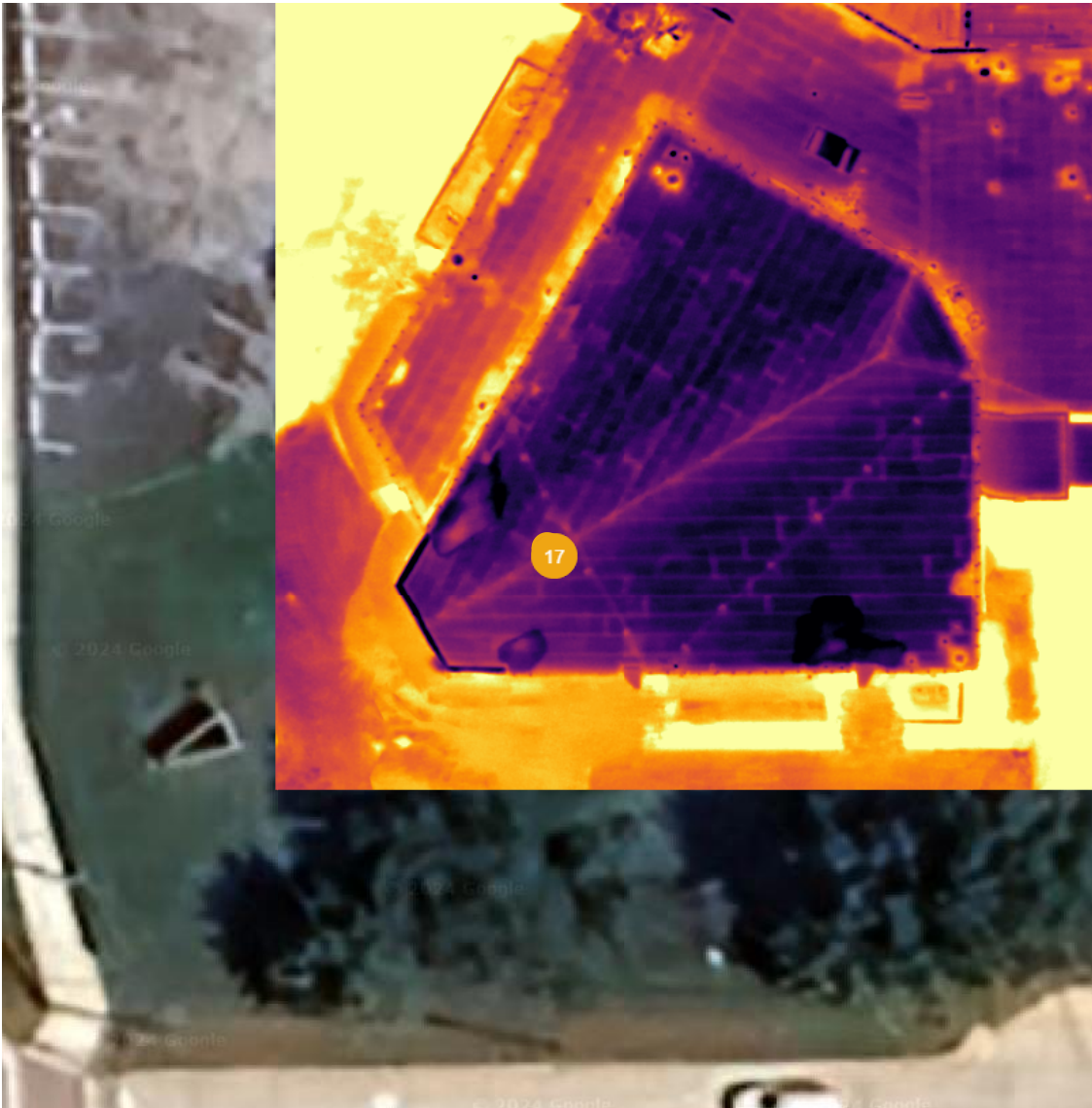
Details

Summary:	Thermal anomaly pattern typical of moisture under membrane at markers. Further investigation is recommended by a qualified professional roofer to verify.		
Created:	Mar 13, 2024, 6:36pm by Jay Bowen		
Cost of Repair:	—		
Lat/Long:	32.89034, -97.15403		
Area:	136.98 ft <sup>2</sup>		
Surface area:	163.05 ft <sup>2</sup>		

17 - Observation

Open

Mar 9, 2024 at 8:03pm



Details

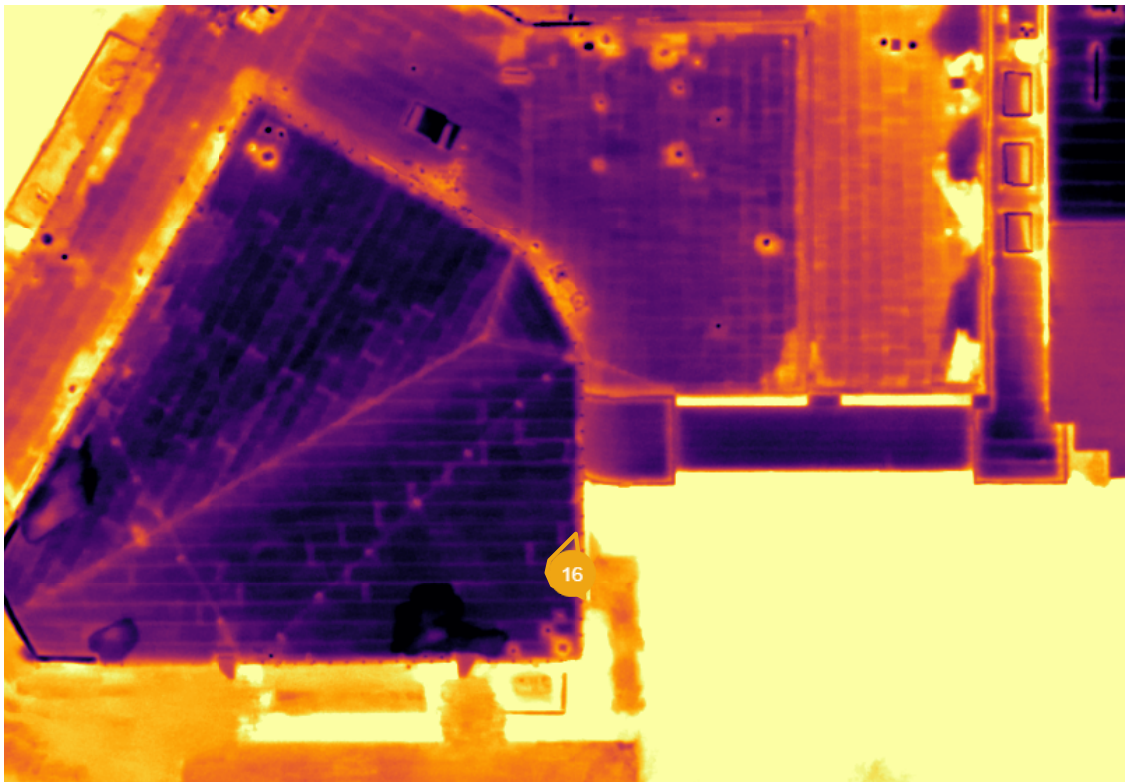
Summary:	Thermal anomaly pattern typical of moisture under membrane at markers. Further investigation is recommended by a qualified professional roofer to verify.		
Created:	Mar 13, 2024, 6:36pm by Jay Bowen		
Cost of Repair:	—		
Lat/Long:	32.89027, -97.15403		
Area:	12.89 ft <sup>2</sup>		
Radius:	2.03 ft		
Perimeter:	12.73 ft		



16 - Observation

Open

Mar 9, 2024 at 8:03pm



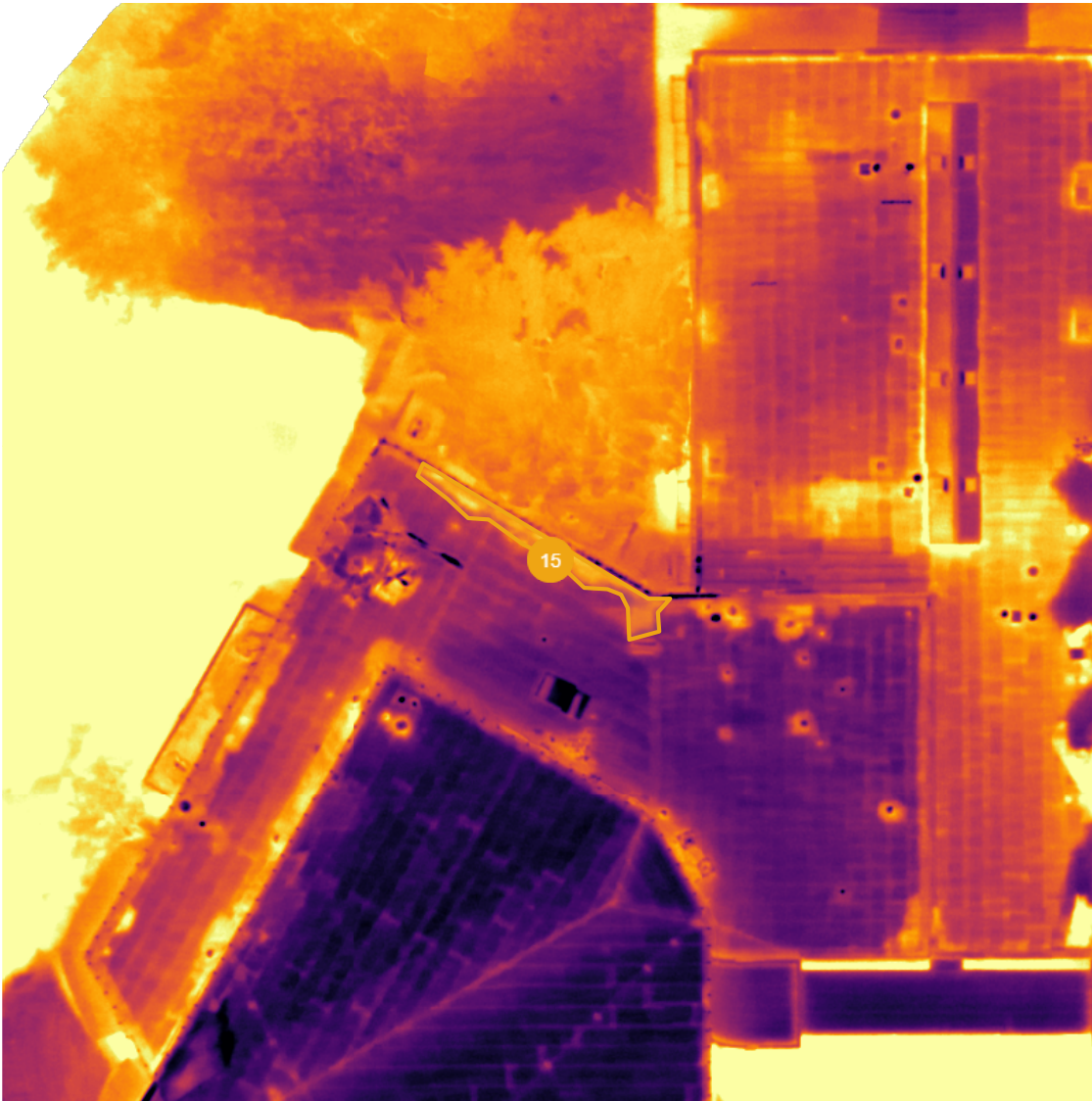
Details

Summary:	Thermal anomaly pattern typical of moisture under membrane at markers. Further investigation is recommended by a qualified professional roofer to verify.		
Created:	Mar 13, 2024, 6:36pm by Jay Bowen		
Cost of Repair:	—		
Lat/Long:	32.89026, -97.15382		
Area:	29.52 ft <sup>2</sup>		
Surface area:	29.97 ft <sup>2</sup>		

15 - Observation

Open

Mar 9, 2024 at 8:03pm



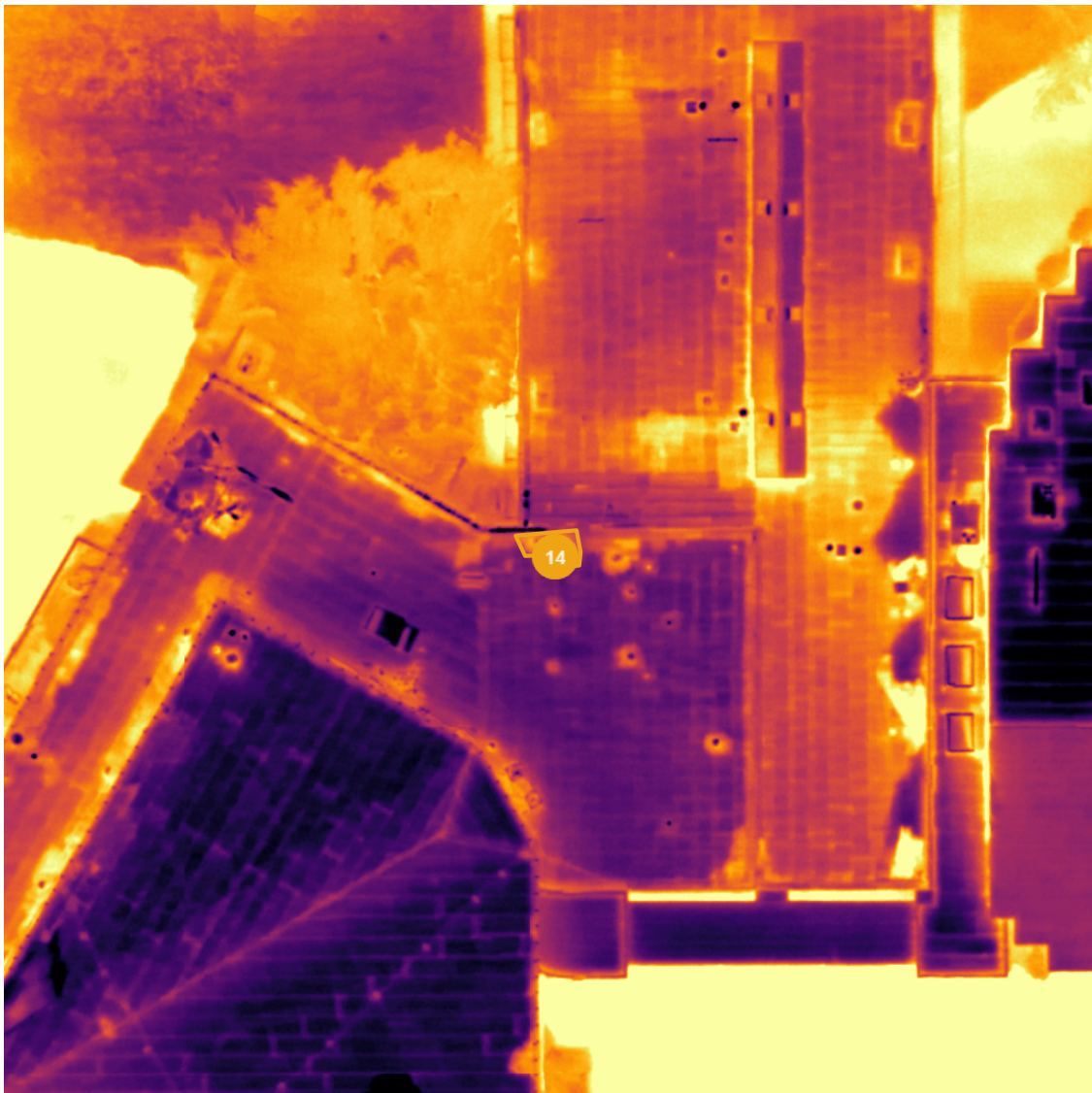
Details

Summary:	Thermal anomaly pattern typical of moisture under membrane at markers. Further investigation is recommended by a qualified professional roofer to verify.		
Created:	Mar 13, 2024, 6:36pm by Jay Bowen		
Cost of Repair:	—		
Lat/Long:	32.89049, -97.15388		
Area:	122.20 ft <sup>2</sup>		
Surface area:	167.23 ft <sup>2</sup>		

14 - Observation

Open

Mar 9, 2024 at 8:03pm



Details

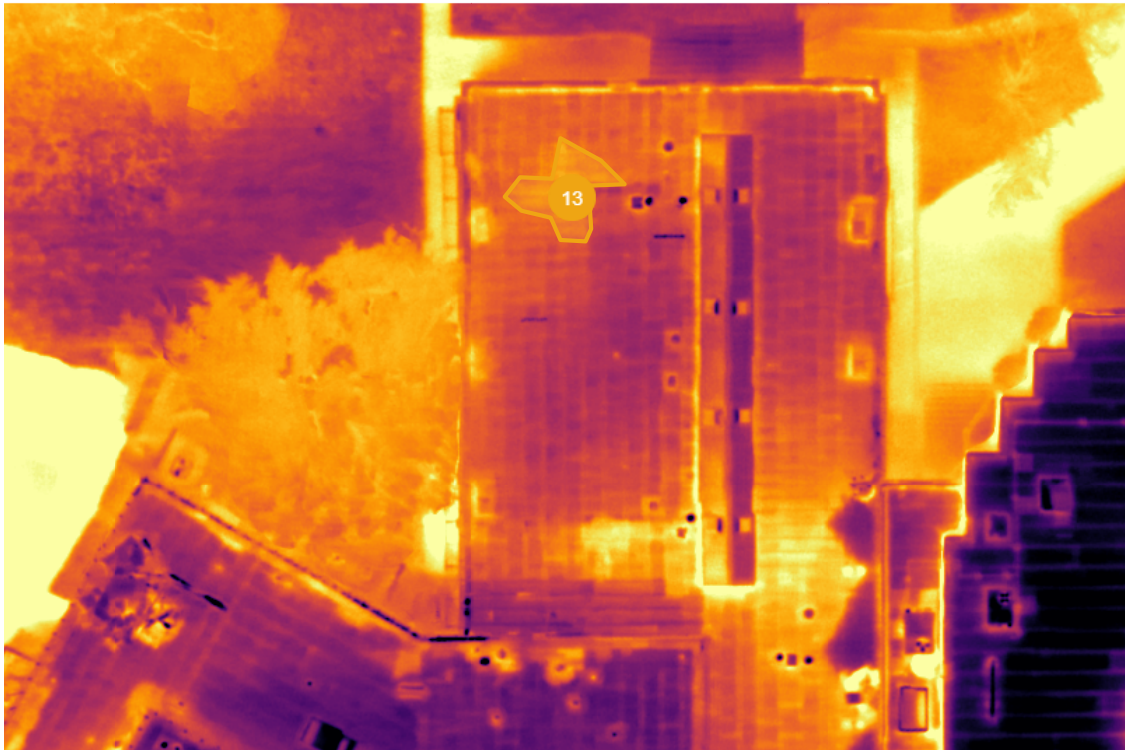
Summary:	Thermal anomaly pattern typical of moisture under membrane at markers. Further investigation is recommended by a qualified professional roofer to verify.		
Created:	Mar 13, 2024, 6:36pm by Jay Bowen		
Cost of Repair:	—		
Lat/Long:	32.89047, -97.15380		
Area:	37.55 ft <sup>2</sup>		
Surface area:	50.25 ft <sup>2</sup>		



13 - Observation

Open

Mar 9, 2024 at 8:03pm



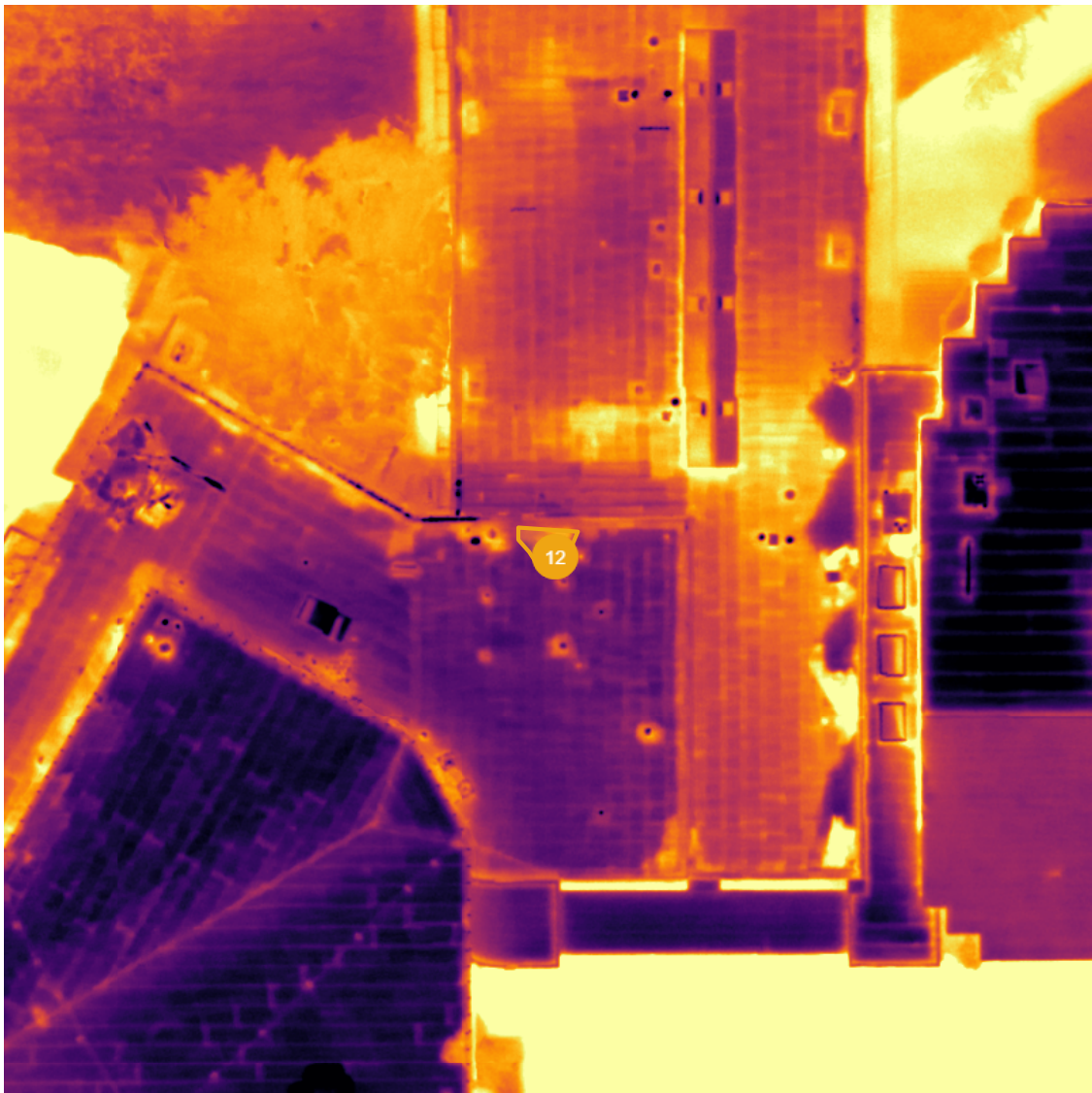
Details

Summary:	Thermal anomaly pattern typical of moisture under membrane at markers. Further investigation is recommended by a qualified professional roofer to verify.		
Created:	Mar 13, 2024, 6:36pm by Jay Bowen		
Cost of Repair:	—		
Lat/Long:	32.89066, -97.15377		
Area:	117.60 ft <sup>2</sup>		
Surface area:	137.29 ft <sup>2</sup>		

12 - Observation

Open

Mar 9, 2024 at 8:03pm



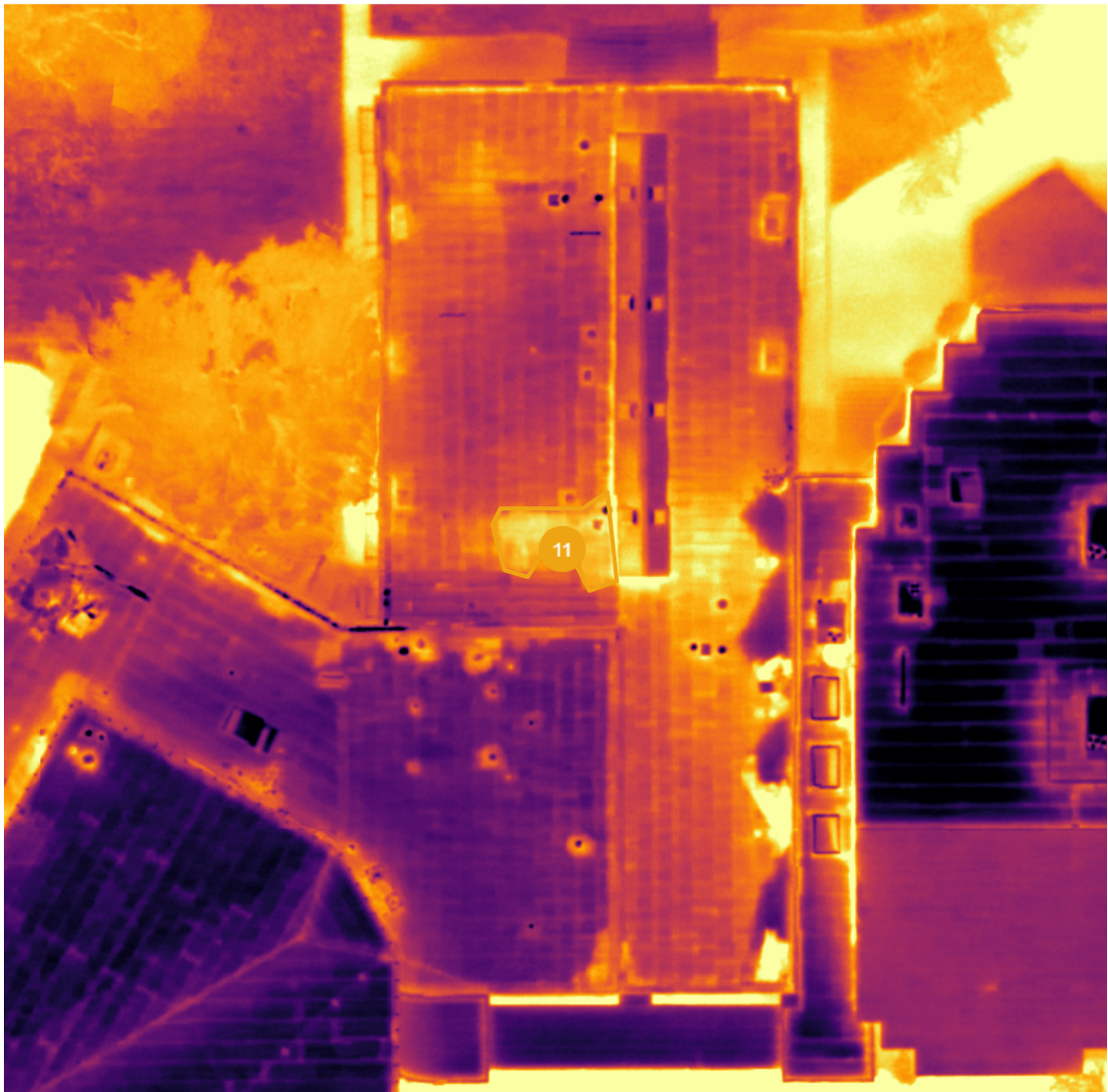
Details

Summary:	Thermal anomaly pattern typical of moisture under membrane at markers. Further investigation is recommended by a qualified professional roofer to verify.		
Created:	Mar 13, 2024, 6:36pm by Jay Bowen		
Cost of Repair:	—		
Lat/Long:	32.89047, -97.15378		
Area:	37.59 ft <sup>2</sup>		
Surface area:	47.61 ft <sup>2</sup>		

11 - Observation

Open

Mar 9, 2024 at 8:03pm



Details

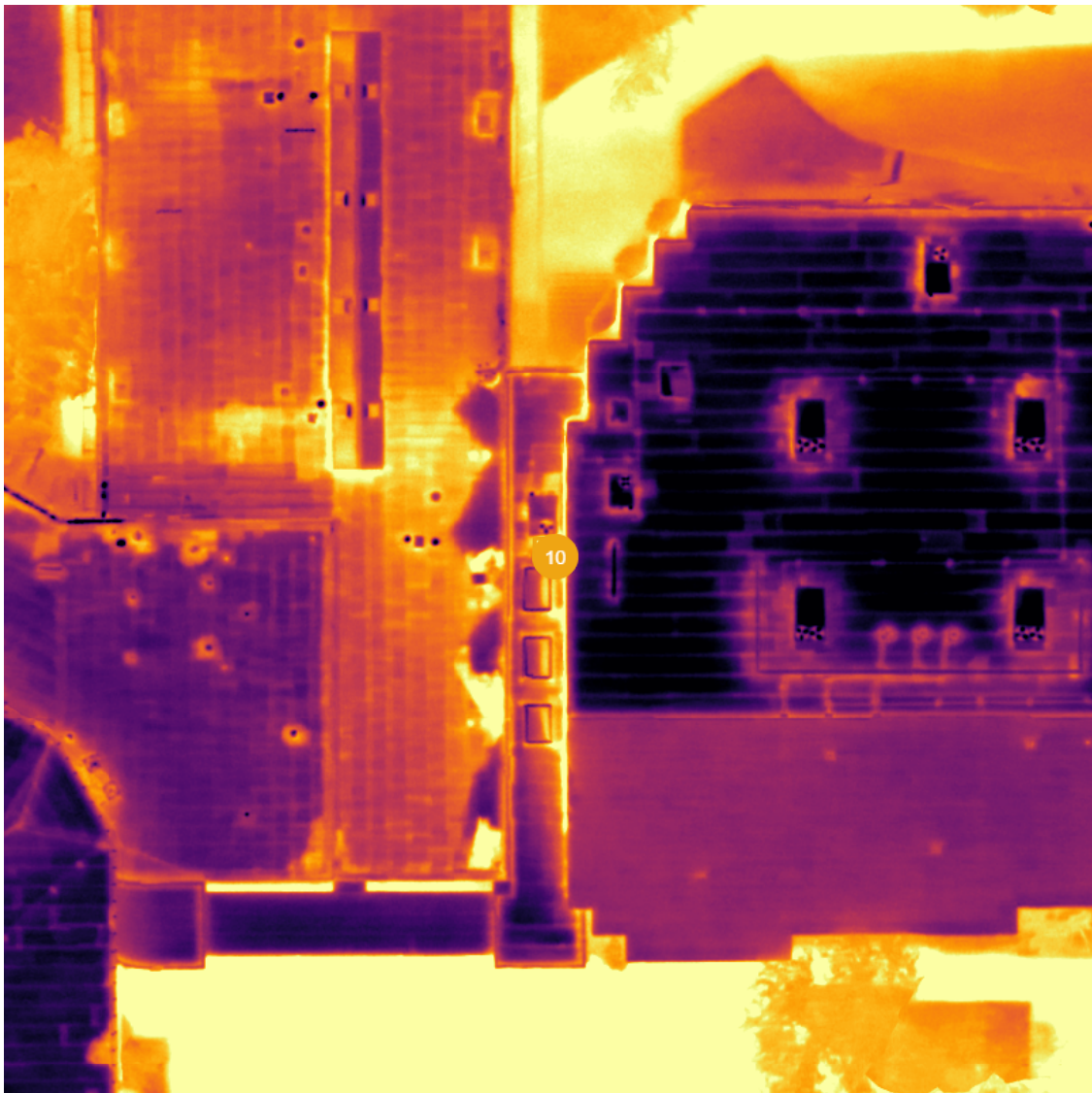
Summary:	Thermal anomaly pattern typical of moisture under membrane at markers. Further investigation is recommended by a qualified professional roofer to verify.		
Created:	Mar 13, 2024, 6:36pm by Jay Bowen		
Cost of Repair:	—		
Lat/Long:	32.89052, -97.15374		
Area:	169.52 ft <sup>2</sup>		
Surface area:	169.47 ft <sup>2</sup>		



10 - Observation

Open

Mar 9, 2024 at 8:03pm



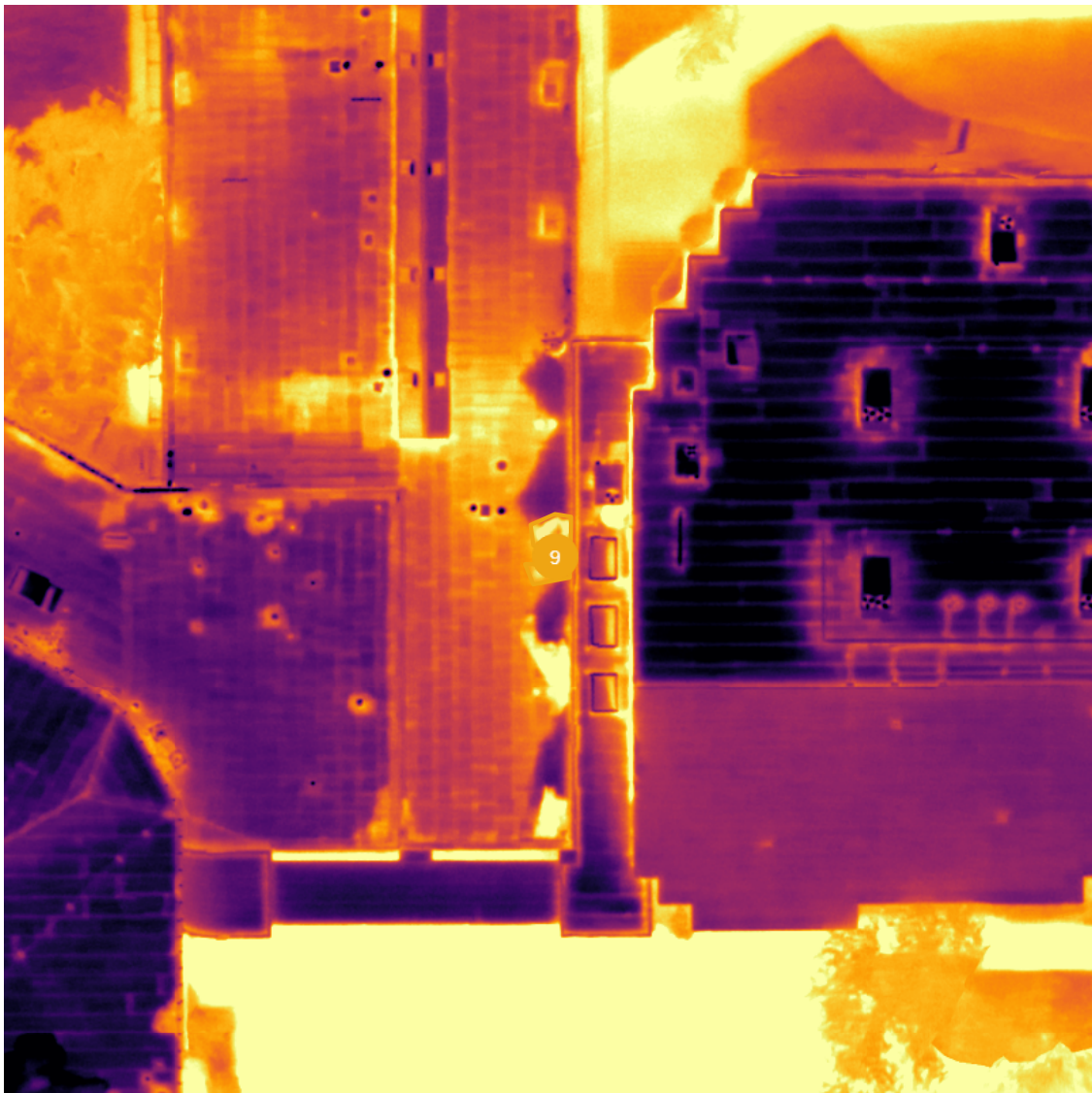
Details

Summary:	Thermal anomaly pattern typical of moisture under membrane at markers. Further investigation is recommended by a qualified professional roofer to verify.		
Created:	Mar 13, 2024, 6:35pm by Jay Bowen		
Cost of Repair:	—		
Lat/Long:	32.89047, -97.15360		
Area:	14.27 ft <sup>2</sup>		
Surface area:	76.51 ft <sup>2</sup>		

9 - Observation

Open

Mar 9, 2024 at 8:03pm



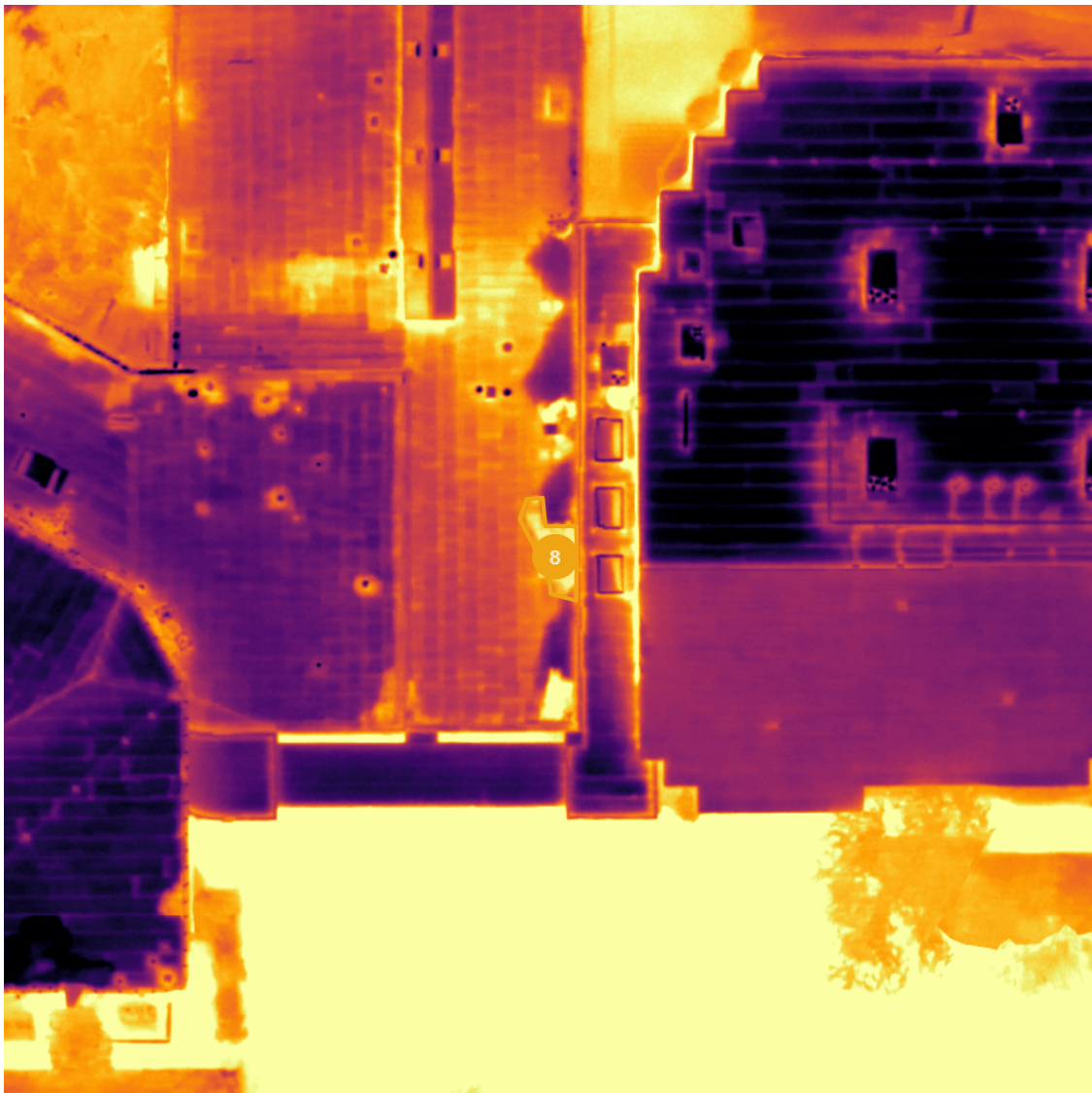
Details

Summary:	Thermal anomaly pattern typical of moisture under membrane at markers. Further investigation is recommended by a qualified professional roofer to verify.		
Created:	Mar 13, 2024, 6:35pm by Jay Bowen		
Cost of Repair:	—		
Lat/Long:	32.89046, -97.15363		
Area:	52.39 ft <sup>2</sup>		
Surface area:	100.74 ft <sup>2</sup>		

8 - Observation

Open

Mar 9, 2024 at 8:03pm



Details

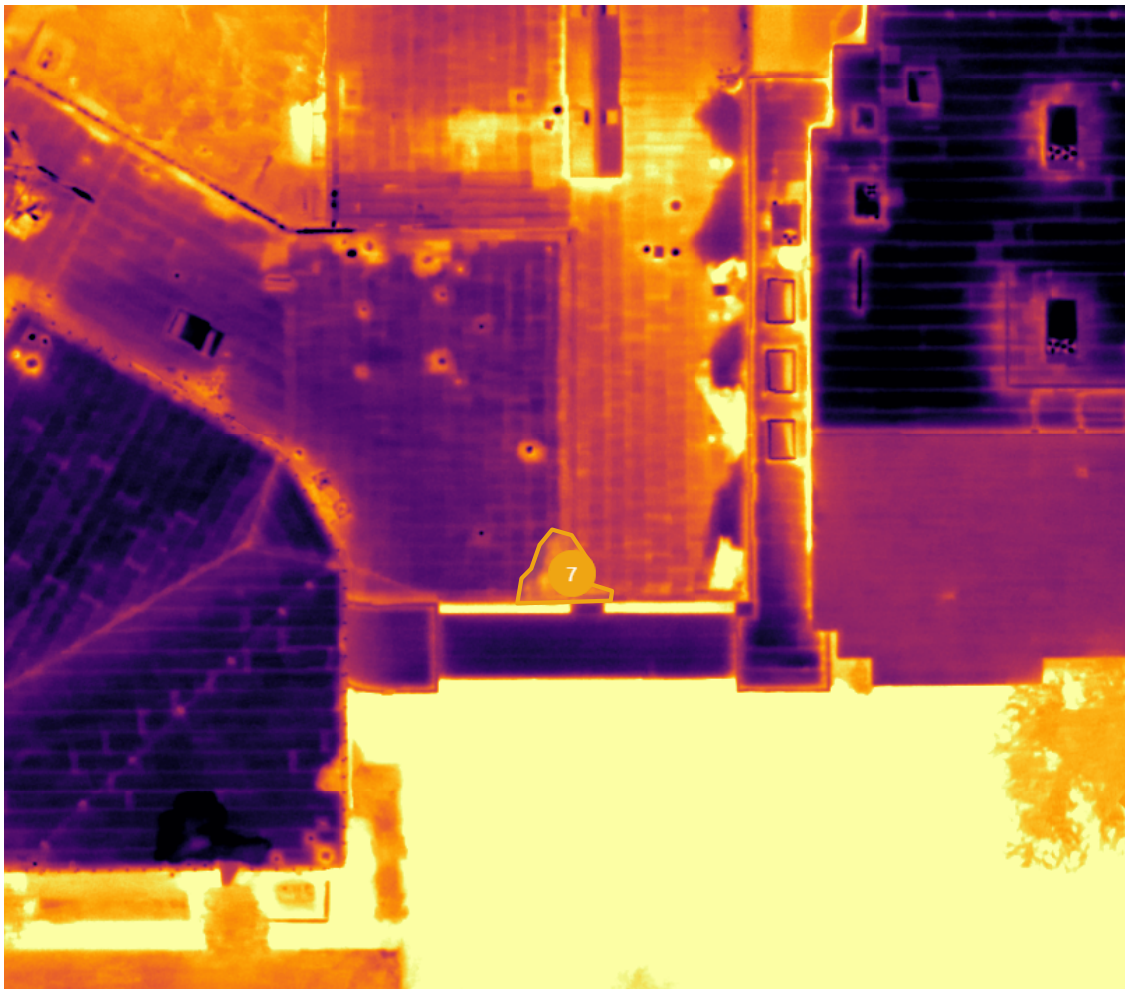
Summary:	Thermal anomaly pattern typical of moisture under membrane at markers. Further investigation is recommended by a qualified professional roofer to verify.		
Created:	Mar 13, 2024, 6:35pm by Jay Bowen		
Cost of Repair:	—		
Lat/Long:	32.89041, -97.15363		
Area:	73.06 ft <sup>2</sup>		
Surface area:	106.17 ft <sup>2</sup>		



7 - Observation

Open

Mar 9, 2024 at 8:03pm



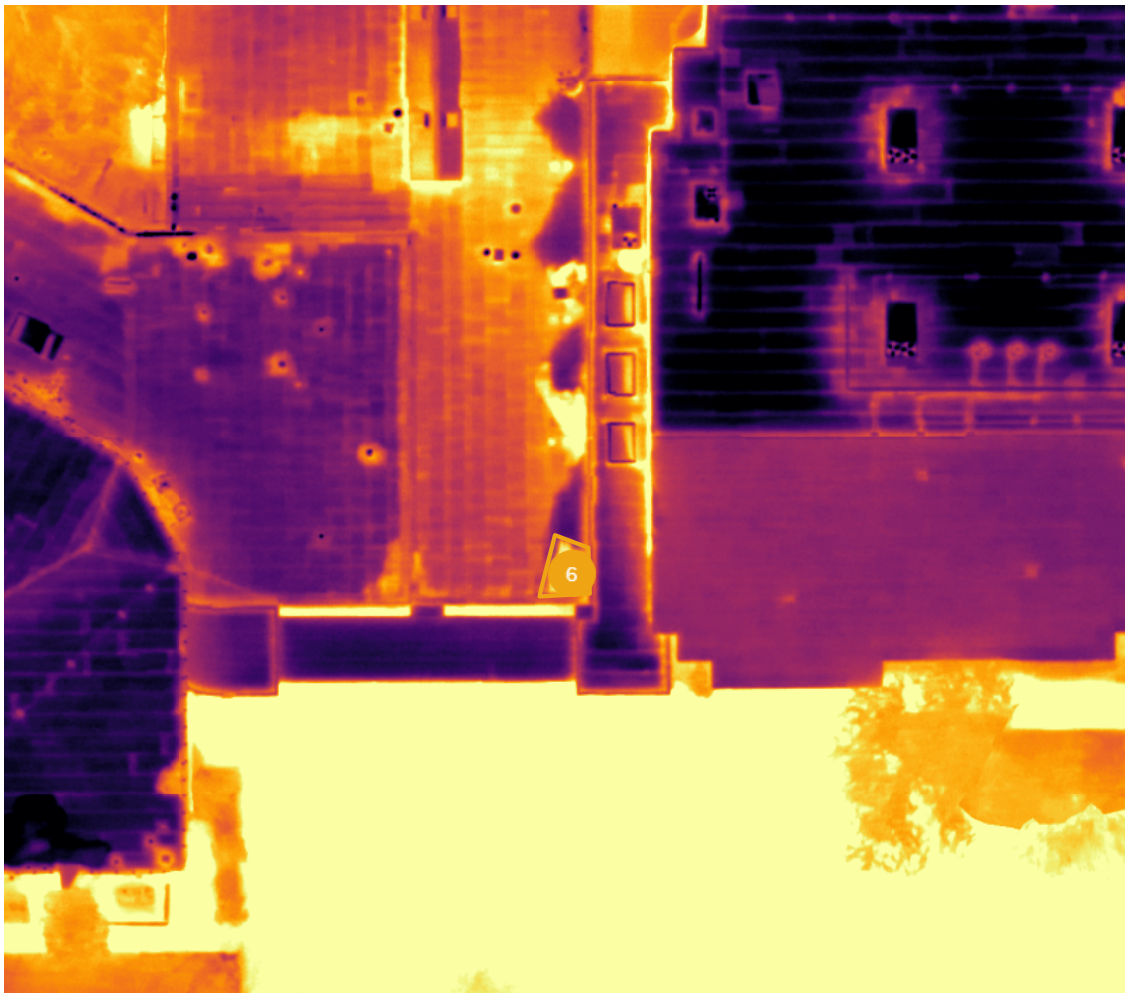
Details

Summary:	Thermal anomaly pattern typical of moisture under membrane at markers. Further investigation is recommended by a qualified professional roofer to verify.		
Created:	Mar 13, 2024, 6:35pm by Jay Bowen		
Cost of Repair:	—		
Lat/Long:	32.89034, -97.15371		
Area:	91.14 ft <sup>2</sup>		
Surface area:	99.73 ft <sup>2</sup>		

6 - Observation

Open

Mar 9, 2024 at 8:03pm



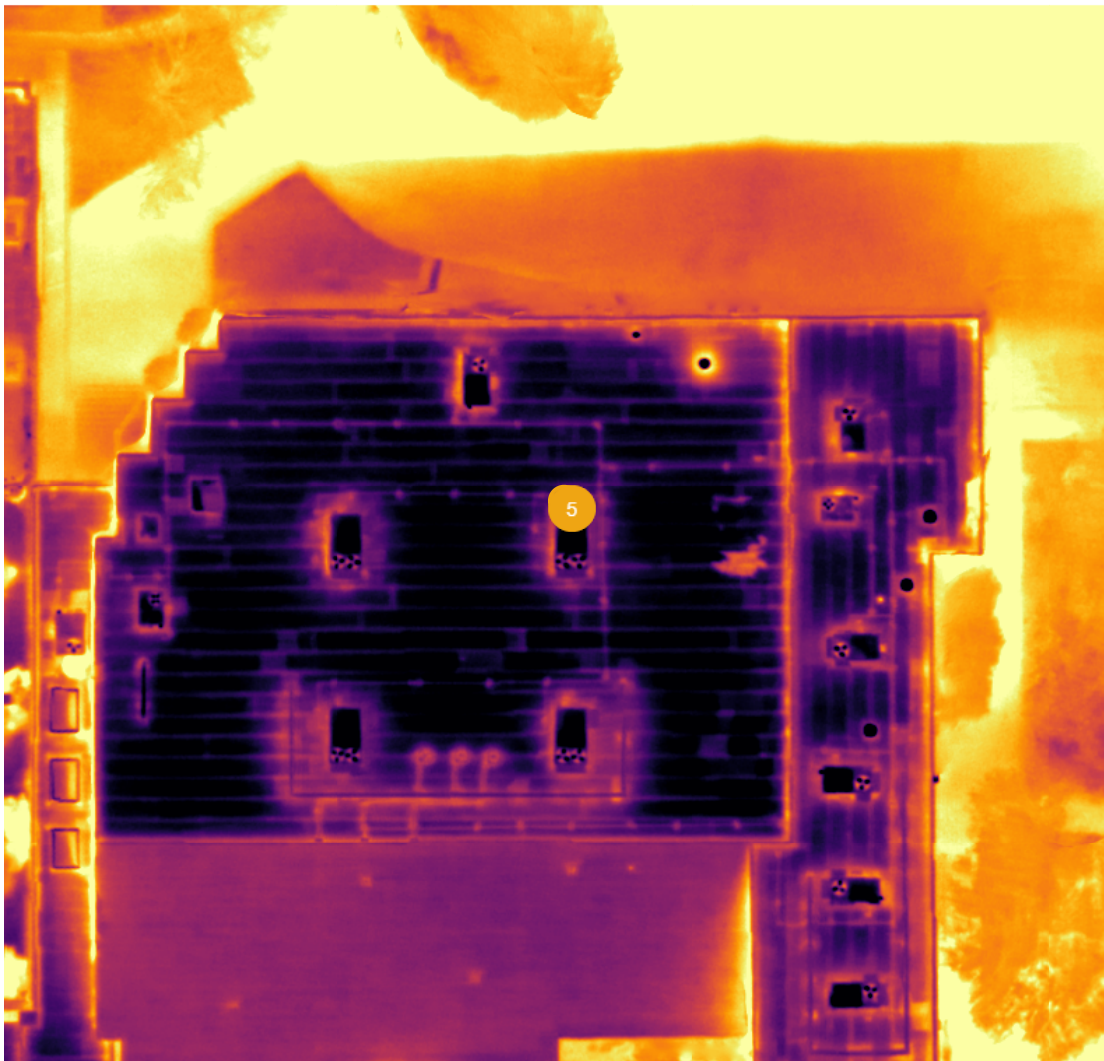
Details

Summary:	Thermal anomaly pattern typical of moisture under membrane at markers. Further investigation is recommended by a qualified professional roofer to verify.		
Created:	Mar 13, 2024, 6:35pm by Jay Bowen		
Cost of Repair:	—		
Lat/Long:	32.89034, -97.15363		
Area:	49.59 ft <sup>2</sup>		
Surface area:	82.34 ft <sup>2</sup>		

5 - Observation

Open

Mar 9, 2024 at 8:03pm



Details

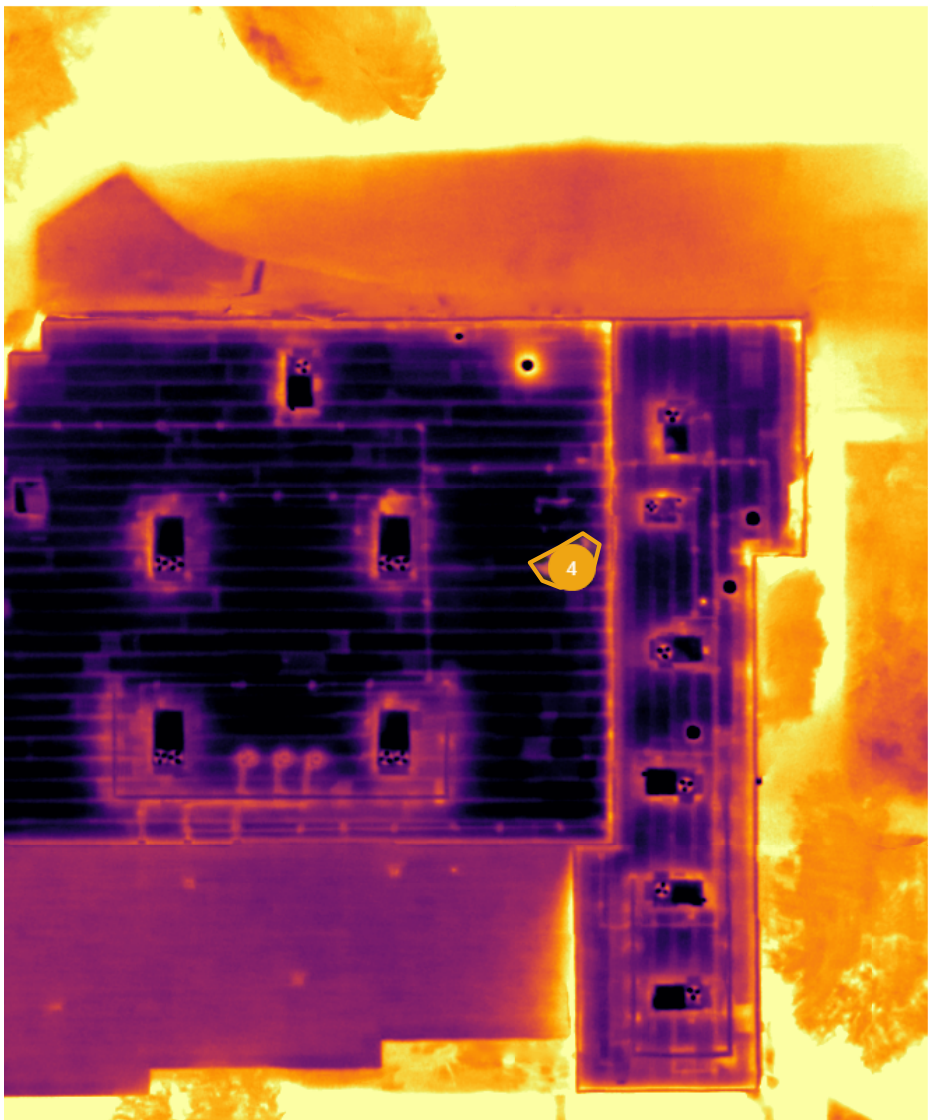
Summary:	Thermal anomaly pattern typical of moisture under membrane at markers. Further investigation is recommended by a qualified professional roofer to verify.		
Created:	Mar 13, 2024, 6:35pm by Jay Bowen		
Cost of Repair:	—		
Lat/Long:	32.89054, -97.15336		
Area:	13.26 ft <sup>2</sup>		
Radius:	2.05 ft		
Perimeter:	12.91 ft		



4 - Observation

Open

Mar 9, 2024 at 8:03pm



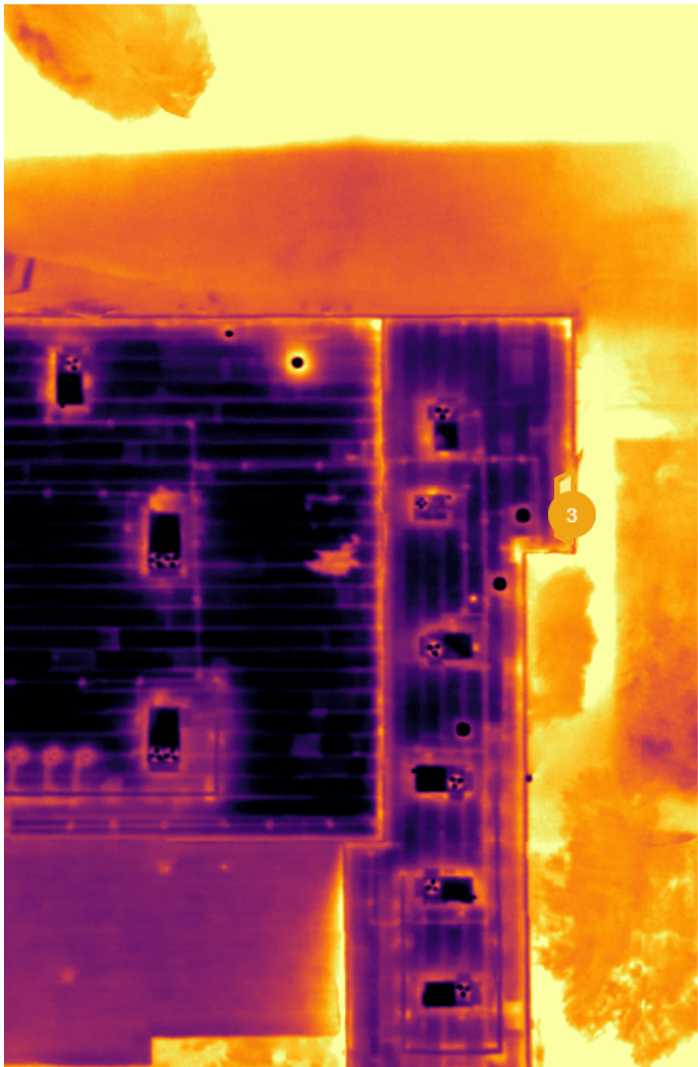
Details

Summary:	Thermal anomaly pattern typical of moisture under membrane at markers. Further investigation is recommended by a qualified professional roofer to verify.		
Created:	Mar 13, 2024, 6:35pm by Jay Bowen		
Cost of Repair:	—		
Lat/Long:	32.89051, -97.15328		
Area:	49.92 ft <sup>2</sup>		
Surface area:	62.66 ft <sup>2</sup>		

3 - Observation

Open

Mar 9, 2024 at 8:03pm



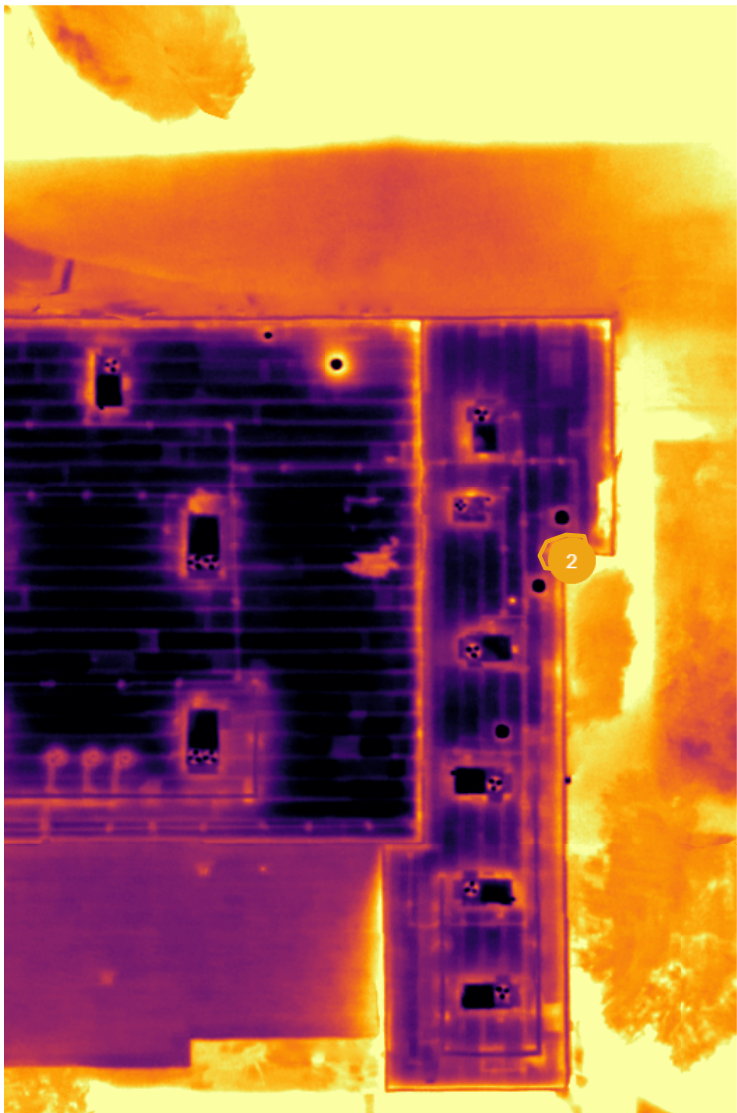
Details

Summary:	Thermal anomaly pattern typical of moisture under membrane at markers. Further investigation is recommended by a qualified professional roofer to verify.		
Created:	Mar 13, 2024, 6:35pm by Jay Bowen		
Cost of Repair:	—		
Lat/Long:	32.89053, -97.15317		
Area:	22.36 ft <sup>2</sup>		
Surface area:	70.10 ft <sup>2</sup>		

2 - Observation

Open

Mar 9, 2024 at 8:03pm



Details

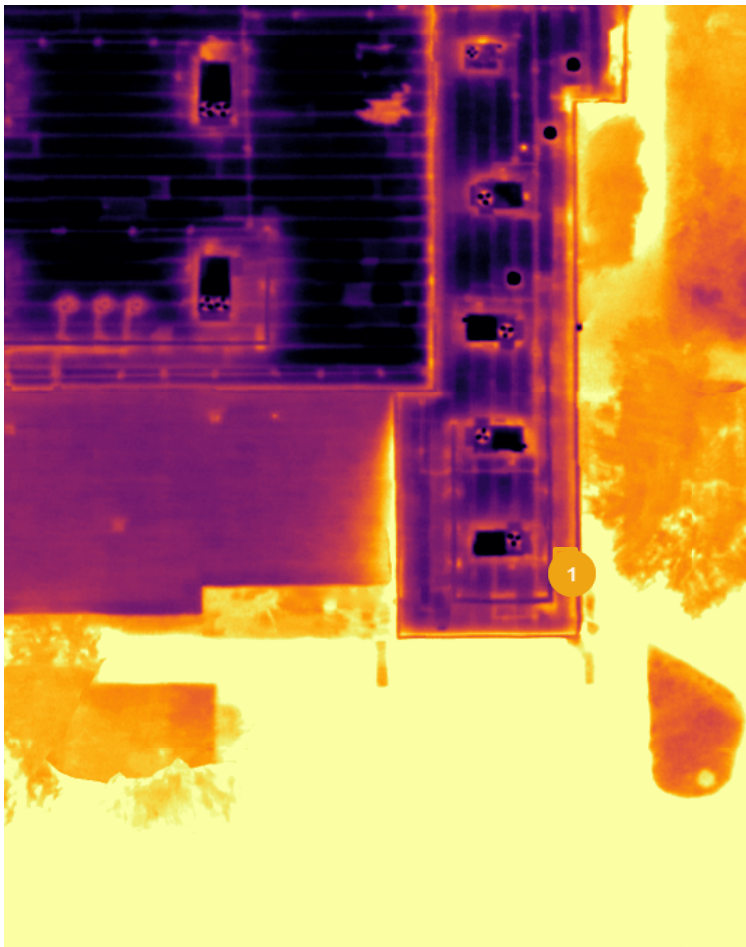
Summary:	Thermal anomaly pattern typical of moisture under membrane at markers. Further investigation is recommended by a qualified professional roofer to verify.		
Created:	Mar 13, 2024, 6:34pm by Jay Bowen		
Cost of Repair:	—		
Lat/Long:	32.89052, -97.15319		
Area:	22.33 ft <sup>2</sup>		
Surface area:	30.32 ft <sup>2</sup>		



1 - Observation

Open

Mar 9, 2024 at 8:03pm



Details

Summary:	Thermal anomaly pattern typical of moisture under membrane at markers. Further investigation is recommended by a qualified professional roofer to verify.		
Created:	Mar 13, 2024, 6:34pm by Jay Bowen		
Cost of Repair:	—		
Lat/Long:	32.89033, -97.15319		
Area:	14.55 ft <sup>2</sup>		
Surface area:	15.82 ft <sup>2</sup>		



## COVERING EVERYTHING FROM THE ROOF TO THE WALLS AND ONTO THE FLOORS

HIGH PERFORMANCE ROOFING SYSTEMS THAT  
KEEP PROJECTS ON BUDGET AND ON TIME

## THE SHERWIN-WILLIAMS DIFFERENCE

Sherwin-Williams Roofing Solutions delivers world-class industry subject matter expertise, unparalleled technical support services, a national network of Authorized Contractors and unmatched regional commercial teams to support our customers nationwide.



Unparalleled  
distribution network



Global  
industry expertise



Most extensive sales  
organization coverage



Unmatched technical  
and specification service

